

# Brompton Life Cranbourne

## Brompton Life Cranbourne



Property Type  
3 Bedroom



Accessibility  
3 Bathroom / 2 Car park



Available  
Now



## About the property

Bedroom only

The 3 resident house is a purpose-built, luxury property in Brompton Estate Cranbourne.

The house comprises four bedrooms – three for residents and one for support staff. The house will be staffed 24/7 including overnight.

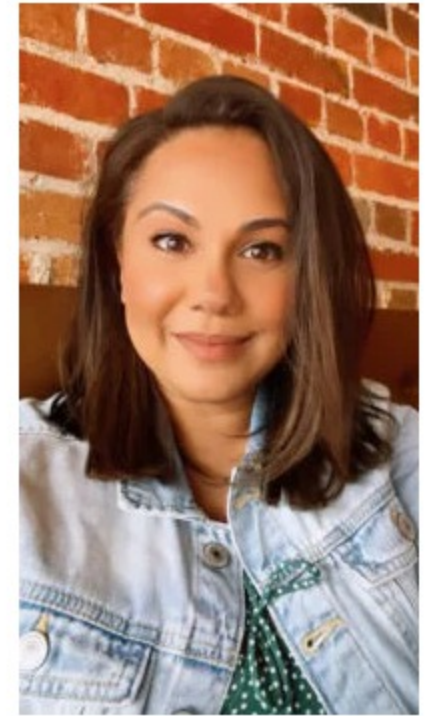
The home has two large open plan living areas, ensuites for each bedroom, double garage, and an accessible backyard.


The house is fully accessible and meets the 'High Physical Support' design category. 'Fully accessible' approved participants are welcome to apply. The house is assistive technology ready.

Applications for the 3 bedrooms are open, build completion is expected in January 22.

 Download Application Form

Chantelle DeZilwa



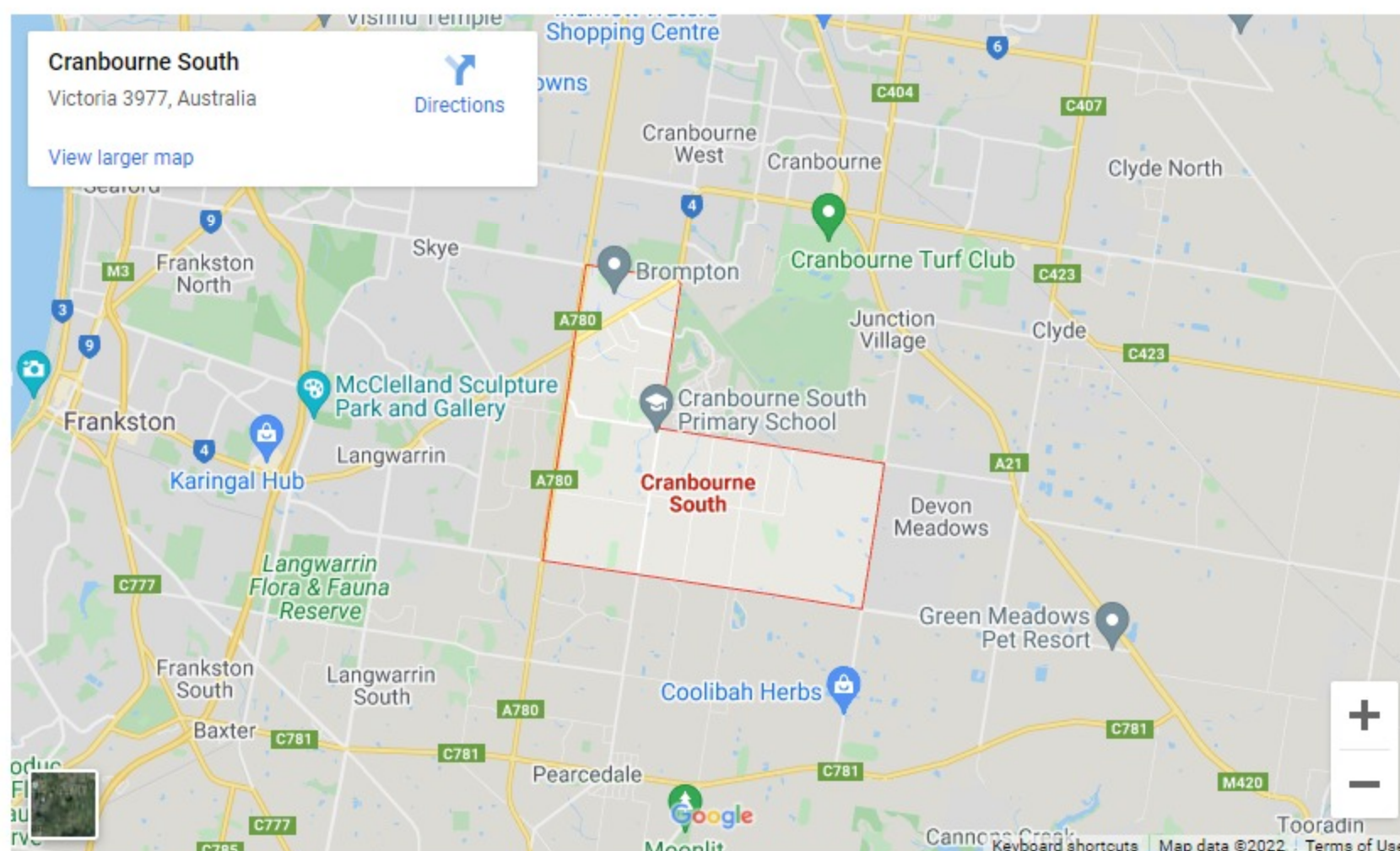
 0405 064 154

## Features

- Doorway Widths > 950mm
- Wheelchair Accessible
- Ensuite
- Built-in Wardrobes

## What's nearby?

- 4km to the nearest train station at Cranbourne VIC, Australia.



Enquire Now